

## High thermally effective IH, boiling assist plate and high-performance hot water storage tank realize high level in tasty noodle cooking and low cost!

Prominent boiling power of thermal efficiency more than 90% and easy to use!

**Noodle boiled at high fire power and moved around in the pot is tasty! Even thick noodles or big portion are completely boiled evenly.**

High thermal efficient IH system is adopted for heat source, which realized boiling power of thermal efficiency at more than 90%. As it is also high in recovery power, the water temperature recovers quickly when shifting from idle time to peak time or casting noodles in succession. Moreover, the bubbles spurting from the holes in the boil assist board which is suitable to IH system make the noodles, regardless of thick ones or big portion, move around in the boiling basket vigorously. Also, our deep boiling basket makes noodles move further more. It suppresses uneven boiling of the noodles and makes the heat go into the center of each string of noodles evenly to boil deliciously.



◀ Maruzen's original boiling assist plate

▼ Deep basket to hold 1.5 serving at one time



**Triple safety devices such as dry-heating preventive device relieve you.**

Dry-heating preventive device, overheating preventive device and inverter protective function prevent seizure of IH coil and dry-heating of the tank.

**Running cost is almost 1/2 of gas heating! Water bill and air-conditioning expenses also can be reduced.**

**High thermal efficient IH makes its low running cost remarkable.**

Since the hot water tank itself generates heat, it does not waste the heat such as the gas heating system where the tank is heated up by the flame from below and the flame escapes from the bottom of the pot. Also with an 80% of the maximum output the noodles are stirred and boiled deliciously enough, which needs almost half of running costs of the conventional gas heating types.

■ Running Cost Comparison Table (when boiling noodles in Noodle Boiler 12 hours/day × 365days)

Product Name	Maruzen Gas Noodle Boiler	IH Noodle Boiler
Model	MRIY-06 equivalent model	MRIY-06
Output	18.0kW	10.0kW
Normal operating output	18.0kW	8.0kW
Annual running cost (365days)	¥803,000	¥403,000
		<b>¥400,000</b>

※As IH Noodle pot works well stirring noodles effectively at the output of 8kW, we set this value as a proper output.

※Running costs are calculated based on the following assumptions.

Gas rate: 270 (yen/m<sup>3</sup>) Electricity rate: 11.5 (yen/kWh)

※Basic electricity rate is charged separately, however, each electric power company has discount rate for electrified kitchen.

**Advantage in annual costs**

**Initial costs can be speedily depreciated.**

Comparing IH Noodle pot and equivalent model of gas heating system, though initial cost of IH ramen pot looks relatively expensive, it is much lower in running costs. The initial cost at the purchase is speedily depreciated by this variance. After that, it turns to a positive figure.

**Outstanding operability in adjusting fire power. IH facilitates fire power adjustment for anyone!**

Fire power is adjusted in a unit of 1%. If you set the value according to the condition such as when turning on the pot, idle time or when boiling noodles, cooking process can be standardized and even a part-time worker can boil just right.



**While a compact body to allow space-saving, effective water capacity is dramatically improved!**

With IH system that makes the water tank itself heat up, there is no extra part such as heater in the tank, which realized, being a compact body, a big improvement in water capacity compared to other noodle boilers. The noodles can be boiled in plenty of hot water.



**SUS304 stainless steel tank of excellent durability and cleanness.**

The tank with a flat surface has rounded corners, which makes it obvious that it is easy to clean. Garbage receiving basket is installed to drain outlet and so is a scum receiver for overflow part, so that broken pieces of noodles or scum is easily collected and reduces the burden during cleaning.

**Hot water storage tank of high heat exchanger effectiveness reduces water bill for added-water and water supply.** **PATENTED**

If water is fed into the hot water storage tank inside the boiling tank, by heat exchange which directly uses the heat energy of the large amount of boiling hot water, the water can be used as added-water. Since it does not need continuous water feeding during the heating as it did conventionally, it reduces water bill. The storage tank is easily removable for cleaning.



**Further more economical by reducing air-conditioning expense and labor cost**

As it does not have combustion exhaust, it maintains the air in the kitchen clean; moreover, as it realized low radiation heat, the kitchen does not become like a sauna, which leads to reduction in air-conditioning expense. Also, easy operability, which is characteristic of IH, contributes to labor saving in the kitchen.

## Eco-friendly design aiming not only at good function but also at improvement of environment!



Maruzen's IH Noodle Boiler is a product which improved the function and operability as kitchen equipment drastically while took improvement of environment into consideration. Clean IH produces less exhaust and reduces radiation heat drastically, which improves work environment in the kitchen and mitigates the load of the worker. Also, this product is highly effective in energy-saving. Therefore, it succeeded in reduction of electricity consumption compared to conventional models, substantially reducing environmental influences.

### MRIY-06

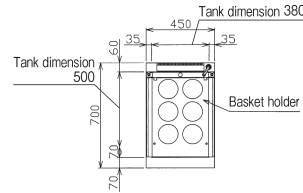
List Price : ¥968,000  
(tax-excluded)

### MRIY-06D

List Price : ¥990,000  
(tax-excluded)

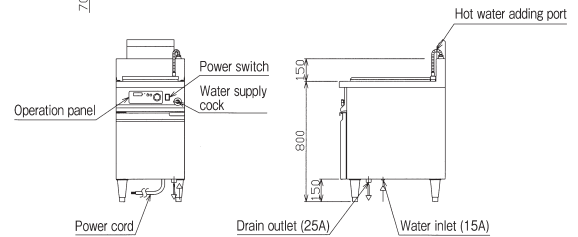


MRIY-06



Cooking Capacity  
**120**  
servings/h

■ Calculation basis:  
Raw noodle 1 serving=120g  
1 boiling time=3min



#### ■IH Noodle Boiler Specifications Table

Model	External Dimension (mm)				Water amount (ℓ)	Power (50/60Hz)	Power consumption (kW)	Necessary hand switch capacity	Power cord	Water inlet	Drain outlet	Safety device	Accessories	Weight (kg)
	Width	Depth	Height	Back										
MRIY-06	450	700	800	150	43	3φ200V	10.0	40A	2m 8mm <sup>2</sup> -4cores direct connecting	15A	25A	Dry-heating prevention device	Noodle boiling basket (6)	45
MRIY-06D	450	750	800	150	43	3φ200V	10.0	40A		15A	25A			45

● Delivery time is about 2 weeks after receipt of order.

Model Change

## Lift-down automatically when you push the Lift Cap of basket! "IH Automatic Noodle Boiler" which lifts up after boiled.

Lift-down automatically when you push the Lift Cap. Buzzer & Lift-up automatically when the set time comes. You do not need to check the status of boiled noodle. Everybody can boil delicious noodles. It is useful at peak times as well as laborsaving. Timer is touch-panel method which is easy to be used. The time can be set in 1 second increments. When you push the Lift Cap during cooking, the boiling stops and lift goes up automatically. Baskets can be lifted up and down by Touch-panel too.



Lift down when you push the Lift Cap.

Touch-Panel

### MRIY-L06

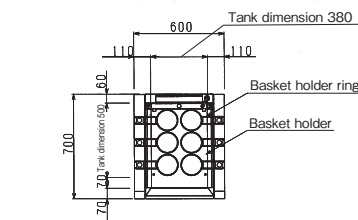
List Price : ¥1,468,000  
(tax-excluded)

### MRIY-L06D

List Price : ¥1,490,000  
(tax-excluded)

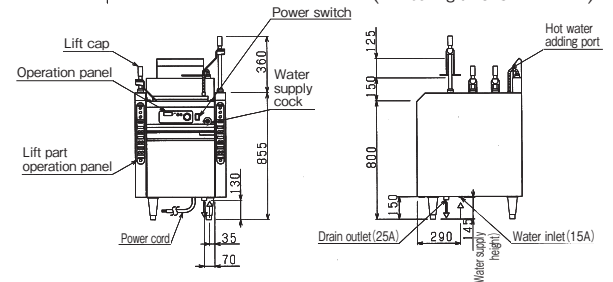


MRIY-L06



Cooking Capacity  
**120**  
servings/h

■ Calculation basis:  
Raw noodle 1 serving=120g  
1 boiling time=3min



#### ■IH Automatic Noodle Boiler Specifications Table

Model	External Dimension (mm)				Water amount (ℓ)	Power (50/60Hz)	Power consumption (kW)	Necessary hand switch capacity	Power cord	Water inlet	Drain outlet	Safety device	Accessories	Weight (kg)
	Width	Depth	Height	Back										
MRIY-L06	600	700	800	150	43	3φ200V	10.2	40A	2m 8mm <sup>2</sup> -4cores direct connecting	15A	25A	Dry-heating prevention device	Noodle boiling basket (6)	85
MRIY-L06D	600	750	800	150	43	3φ200V	10.2	40A		15A	25A			85

● Delivery time is about 2 weeks after receipt of order.