

Drawer type

Drawer type to facilitate putting food in and out for steaming. Ideal for steaming of a large variety but small portion of food.

- 2-tank type (MUD-23C, 24C, MUDE-23, 24) can cook using the left part and right part independently.
- Continuous automatic water feeding system installed.
- All stainless steel exterior - durable and hygienic.

Make sure a water softener is attached when installed. If the hardness of raw water is high or the water consumption is large, fully automatic water softener is recommended.

Drawer type cooking capacity (capacity per drawer)

Menu	Weight of ingredient/piece	Quantity	Cooking time
Frozen shumai	30g	105	20min
Frozen Chinese Bun	80g	30	30min
Chawanmushi (savory steamed egg custard)	120g	30	20min

Gas

Drawer type steamer has passed the type inspection of Japan Gas Appliances Inspection Association (LP gas, 13A).

With dry-heating preventive device



Standard spec - 1 tank type, 3 drawers

MUD-13C List Price
¥354,000 (tax-excluded)

MUD-13CNU With cartridge type water softener List Price
¥384,000 (tax-excluded)

Standard spec - 1 tank type, 4 drawers

MUD-14C List Price
¥405,000 (tax-excluded)

MUD-14CNU With cartridge type water softener List Price
¥435,000 (tax-excluded)

Resin rail spec - 1 tank type, 3 drawers

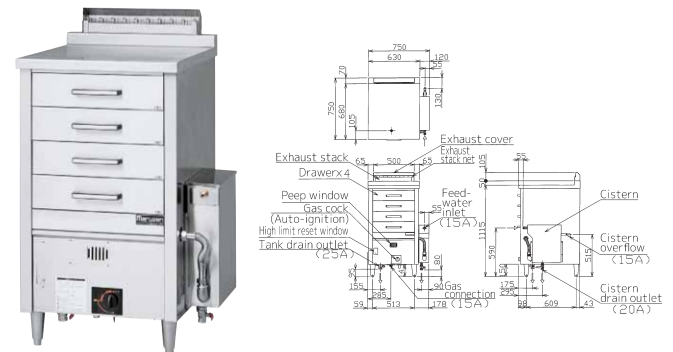
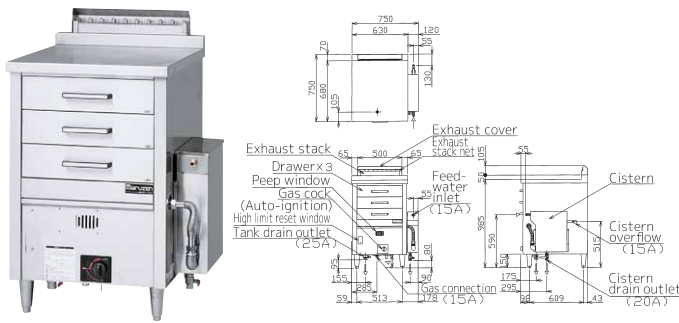
MUD-J13C List Price
¥420,000 (tax-excluded)

MUD-J13CNU With cartridge type water softener List Price
¥450,000 (tax-excluded)

Resin rail spec - 1 tank type, 4 drawers

MUD-J14C List Price
¥480,000 (tax-excluded)

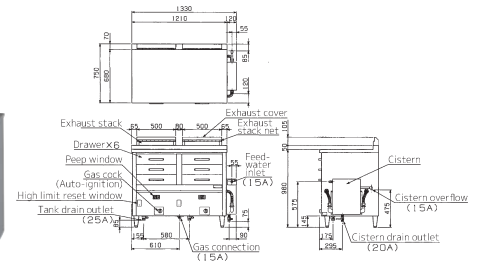
MUD-J14CNU With cartridge type water softener List Price
¥510,000 (tax-excluded)



Standard spec - 2 tank type, 6 drawers

MUD-23C List Price
¥635,000 (tax-excluded)

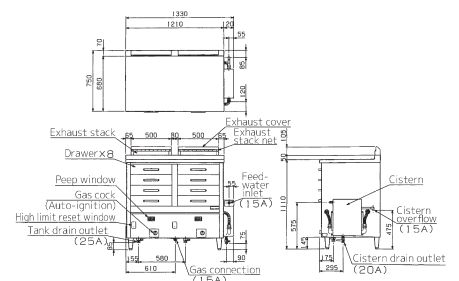
MUD-23CNU With cartridge type water softener List Price
¥665,000 (tax-excluded)



Standard spec - 2 tank type, 8 drawers

MUD-24C List Price
¥850,000 (tax-excluded)

MUD-24CNU With cartridge type water softener List Price
¥880,000 (tax-excluded)



Drawer Type <Gas> Specifications

Model	External dimensions(mm)			Drawer effective dimensions (mm)			Gas consumption		Gas connection	Feed-water inlet	Tank drain outlet	Cistern overflow	Cistern drain outlet	Weight (kg)
	Width	Depth	Height (Back)	Width	Depth	Height	Town gas	LPG						
MUD-(J)13C (NU)	750	750	985 (50)	470	560	115	15.1kW (13,000kcal/h)	14.5kW (1.04kg/h)	15A	15A	25A	15A	20A	106
MUD-(J)14C (NU)	750	750	1,115 (50)	470	560	115	15.1kW (13,000kcal/h)	14.5kW (1.04kg/h)	15A	15A	25A	15A	20A	118
MUD-23C (NU)	1,330	750	985 (50)	470	560	115	30.2kW (26,000kcal/h)	29.1kW (2.08kg/h)	20A	15A	25A×2	15A	20A	191
MUD-24C (NU)	1,330	750	1,115 (50)	470	560	115	30.2kW (26,000kcal/h)	29.1kW (2.08kg/h)	20A	15A	25A×2	15A	20A	219

※Models (J) are resin rail spec. ※ Models (NU) have cartridge type water softener (NFX-OS). ※Delivery date is about 10 days for MUD-(J)13C/(J)14C and about 2 weeks for 23C/24C after receipt of order.

General restaurants, specialized restaurants...
for every kind of industry.

- Piezoelectric lighting system, with pilot light safety device. (Gas)
- Energy-saving with an one-touch operation to switch Keep Warm mode during idle time. (Electric)



● Resin rail spec
Enables to open/close the drawer slowly and surely to prevent the steamed food inside from collapsing or being spilt easily. (Models of type J)

Electric

Standard spec - 1 tank type, 3 drawers

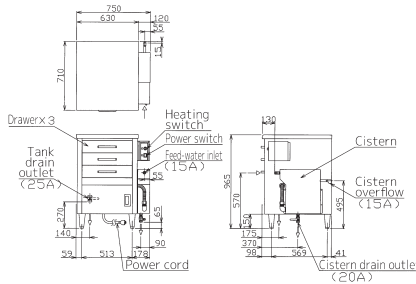
MUDE-13 List Price
¥520,000 (tax-excluded)

MUDE-13NU With cartridge type water softener List Price
¥550,000 (tax-excluded)

Resin rail spec - 1 tank type, 3 drawers

MUDE-J13 List Price
¥590,000 (tax-excluded)

MUDE-J13NU With cartridge type water softener List Price
¥620,000 (tax-excluded)



Standard spec - 1 tank type, 4 drawers

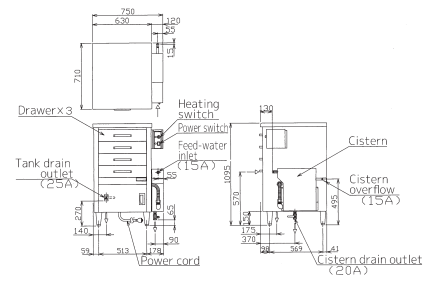
MUDE-14 List Price
¥580,000 (tax-excluded)

MUDE-14NU With cartridge type water softener List Price
¥610,000 (tax-excluded)

Resin rail spec - 1 tank type, 4 drawers

MUDE-J14 List Price
¥660,000 (tax-excluded)

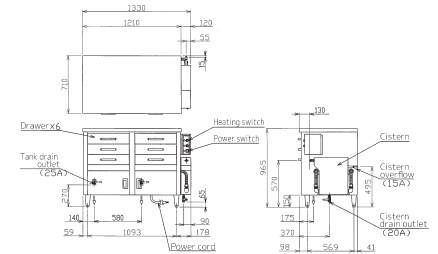
MUDE-J14NU With cartridge type water softener List Price
¥690,000 (tax-excluded)



Standard spec - 2 tank type, 6 drawers

MUDE-23 List Price
¥915,000 (tax-excluded)

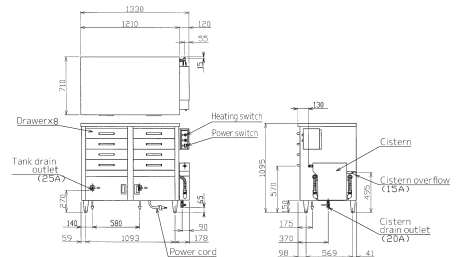
MUDE-23NU With cartridge type water softener List Price
¥945,000 (tax-excluded)



Standard spec - 2 tank type, 8 drawers

MUDE-24 List Price
¥1,030,000 (tax-excluded)

MUDE-24NU With cartridge type water softener List Price
¥1,060,000 (tax-excluded)



Drawer Type <Electric> Specifications

Model	External dimensions(mm)			Drawer effective dimensions (mm)			Power (50/60Hz)	Power consumption	Necessary hand switch capacity	Power cord	Feed-water inlet	Tank drain outlet	Cistern overflow	Cistern drain outlet	Weight (kg)
	Width	Depth	Height	Width	Depth	Height									
MUDE-(J)13 (NU)	750	710	965	470	560	115	3φ200V	6.0kW	20A	2m Ground 3P 20A with hook plug	15A	25A	15A	20A	103
MUDE-(J)14 (NU)	750	710	1,095	470	560	115		6.0kW	20A	2m Ground 3P 20A with hook plug	15A	25A	15A	20A	115
MUDE-23 (NU)	1,330	710	965	470	560	115		12.0kW	40A	2m 8mm-4cores direct connecting	15A	25A×2	15A	20A	185
MUDE-24 (NU)	1,330	710	1,095	470	560	115		12.0kW	40A	2m 8mm-4cores direct connecting	15A	25A×2	15A	20A	213

※Models (J) are resin rail spec. ※ Models (NU) have cartridge type water softener (NFX-OS). ※Delivery date is about 3 weeks after receipt of order.